

EXTENSIONS

SOUTH COAST EQUESTRIAN CLUB INC NEWSLETTER

July 2016

President's Report July 2016

Another fabulous comp day – weren't we lucky with the weather. I don't think you could have asked for a more perfect day weather wise !! And after all the rain earlier in the year the grounds were nice and supple (not too hard, not too soft), and the arenas rode very well.

Congratulations to Hayley Robl, Vicki Shephard and Taylah Stuart, our Jackpot class winners. It was a closely fought contest with less than 0.2 of a point between first and second, and less than 1 point between second and third !!

Pony Club again provided a canteen. FANTASTIC !! And again we had very good feedback on the canteen food and drink availability, and also on the quality of the food and drink. Thank you PC team, especially the young man who played butler and helped

carry purchased food and drink back to people's floats– it was very much appreciated !!!

And as always, a big thank you to all the SCEC committee members. Many of us compete on the day as well as run the event, and it is a testament to everyone's dedication, good nature and unflappability (technical term) that our events run so smoothly.

Our next Dressage Competition day is on Sunday 21 August. Entries close Friday 5 August at 11pm. Details of the comp can be found in this newsletter. Entry to our competitions is via www.globalentriesonline.com.au ... and is available to enter now.

Running competition days requires input from many people ... and we ask that all our members volunteer to help with one task or another as often as they possibly can, especially on competition days ... helping set up the grounds, pencilling, collecting tests are just some of the myriad of tasks that we need help with.

SCEC committee meetings are held at

7pm on Thursday's (see dates on our website; next date 4 August 2016) at the Albion Park Bowling Club. All members are welcome to attend committee meetings and we encourage anyone who may have ideas, suggestions or just a general interest in what's going on to come along.

Finally, in my role as President, happy riding..

Frances Simmonds
President

SCEC is now
on Facebook



Wet Weather Problems

Many areas are receiving good rains. In some places, higher than usual seasonal rainfall has resulted in severe flooding. With the prolonged wet weather, problems such as greasy heel, rain scald (mud fever) and soft hooves often develop in grazing horses on low lying or flat, poorly drained paddocks. We include a brief in this newsletter on each of these problems and some handy hints on managing persistent cases.

Greasy Heel



Many horse owners have a horse with white socks on the heels, pasterns and above the fetlock, especially on the hind limbs, which are prone to developing chronic greasy heel.

Greasy heel is caused by microbial invasion into the skin surface, producing a greasy discharge which tends to matt the hair. The inflamed skin dries out, cracks and can cause chronic discomfort and lameness. The skin reaction is also triggered by exposure to UV light, which

causes a form of 'solar dermatitis' in sensitive horses. Horses normally graze walking away from the sun so that they are not blinded by the light. This grazing habit exposes the lower legs, especially the hind pasterns with white socks, to UV light under the damp conditions of winter when the angle of the sun's rays are lowest in the sky, especially in the southern Australian states.

Handy Hint Managing and Controlling Greasy Heel

Here's a useful remedy – gently scrub off the grease with a warm solution of laundry soap (eg. Sunlight® soap) using a soft brush. If very inflamed, apply a cortisone/antibiotic preparation for 3-5 days, as prescribed by your vet and then scrub off the scabs (be aware of withdrawal times when using prior to competition as cortisone residues will be detected in a swab).

Consult your own vet for advice. Pat dry, apply weak PVP iodine solution (eg Betadine 10%) twice daily for 2-3 days, or until any broken skin is healed. Each morning apply a thin coating of a zinc cream or a UV factor 30+ sunscreen lotion to reduce UV reaction. It will help prevent recurrence and repel excess moisture and minimise skin cracking. Seek further advice from your vet.

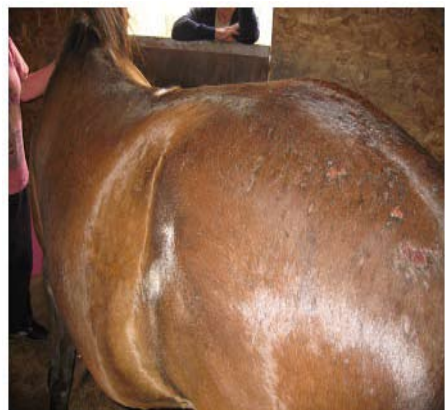
Rain Scald/Mud Fever

Rain scald, or 'mud fever', most commonly results from the invasion of the skin layers by branching fungal-like bacterial organisms which contaminate dust, soil and mud.

Rain scald is found on the flat parts of the top-line and rump, as the water does not drain off as quickly as compared to the sides of the body. A horse exposed to extended rainy conditions for 5-7 days can soften the skin. The organism invades the skin and hair follicles, resulting in inflammation and loss of skin in scab-like small tufts of hair, leaving a juicy crater of pus and exudates. Young horses, sick horses, horses under stress and aged horses are more prone to 'rain scald' because their immunity is not well developed, compromised or waning with old age. Some horses enjoy rolling in dusty areas or even in mud, which contaminates their topline and rump with soil borne micro-organisms. Horses sharing grazing pastures with sheep and cattle are more likely to develop greasy heel and rain scald because the same microbes cause skin conditions in these grazing animals.

There are a number of topical medicated shampoos or washes which are suitable to help control Rain Scald. The most commonly used is 10% Betadine® or Vetadine® wash, both containing slow-release PVP iodine. After lathering the coat and removing the mud and dirt, apply a second wash, lather it up and leave it on the skin for 10-15 minutes for the PVP iodine to release its iodine to help control the fungal-like infection. Washing it off promptly reduces its effectiveness.

After rinsing, pat the skin dry with a clean towel. Repeat the iodine wash every second day for 3-4 washes until the skin clears up and the scabs heal.



Handy Hint Keep the Topline Dry Under Wet Conditions to Prevent Rain Scald

Here's a useful remedy – gently scrub. Cover the horse with a water proof rug if it is raining, but ensure the inside lining of the rug is clean and not contaminated with debris from the original infection. Do not leave the rug on if it is hot, as the horse may sweat and the moisture will keep the skin soft and encourage ongoing invasion by the Rain Scald organisms. In chronic cases, a daily supplement containing copper, zinc, organic selenium and vitamin A, such as Kohnke's Own Cell-Vital, Cell-Provide or Aussie Sport, is recommended to help maintain skin immunity as a pasture diet is often low in these nutrients. In severe recurring cases, it is best to relocate the horse to another pasture or a drier locality. Consult your vet for advice.

Soft, Wet Hooves

Wet, rainy winter conditions increase the moisture content of the soles and frog which are unable to dry out on low lying ground, clay based soils and flat paddocks.

The soles soften, reducing weight bearing capacity, especially in heavy-weight horses and heavily pregnant mares at pasture. They may become lame and have difficulty in walking to graze. Build-up of mud contaminated with soil borne microbes under the soles and around the frog, can increase the risk of white-line disease, seedy toe, thrush and hoof abscesses. Hoof abscesses are most common following a dry period when hooves may dry out and develop hairline cracks and harbour soil microbes, especially in horses grazing on rough, stony country.

If the soles and frog are saturated and soft, clean away mud and wipe off excess moisture. Then apply methylated spirits with a Chux® wipe to repel excess moisture and help dry the soles. Then apply 10% Betadine PVP iodine to reduce microbial contamination. Repeat daily for 3-4 days to dry the hooves and harden the frog.

Applications of Kohnke's Own Hoof-Seal® will help to maintain normal moisture content within the sole, as the natural oil and breathable polyurethane blend, repel excess moisture uptake, as well as reduce mud and soil build-up on the sole and around the frog. Apply a thin coating after cleaning the hooves, repeat every second day for 3-4 times, then apply once a week.



Handy Hint Hoof-Seal for Dry Hooves

If a period of dry weather precedes rainy weather, apply Hoof-Seal once a week to the sole and frog to help maintain moisture levels and minimise shrinkage and cracking of the dried-out sole. When the wet weather arrives, apply Hoof-Seal every third day until the ground dries out and then once weekly thereafter.

Reproduced with permission from:

A supplement to Kohnke's Own Talking Horses Equestrian Issue 20, 2010.



**Next
Competition**

21st August, 2016

globalentriesonline.com.au

**Entries close
9 pm 5th August**



**Does your dog need a new
dog bed???**

Our new sponsor may be able to help.....



Alpha Dog Beds
PROUDLY AUSTRALIAN MADE

See Alpha Dog Beds huge range of quality dog beds at

alphadogbeds.com.au

2016 SCEC Committee

President

Frances Simmonds

0411 092 207

frances@uow.edu.au

Co-Vice President

Ebony-Lee Holz

0408 165 231

ebony89@live.com.au

Co-Vice President

Leanne Micallef

0439 464 631

lmicallef73@bigpond.com

Secretary

Amanda Whittall

amanda.whittall@gmail.com

Treasurer

Amy Langlands

amy@middletonfp.com.au

Newsletter

Ewa Mantaj

ewamantaj@hotmail.com

Judges Co-ordinator

Sandra Eldridge

mreldridge@myacn.net.au

Committee

Sonja Verheyen

sonja.verheyen5@gmail.com

Monica Shephard

monnies1@hotmail.com

**Enter our next
competition at**

globalentriesonline.com.au

June Competition



southcoastquestrianclub.com.au

SCEC Dressage Competition - Results
Sunday 3 June 2016

Place	Rider	Horse	Avg %	Judge: Sarina Hurst Score
-------	-------	-------	-------	---------------------------------

Prep E CU

1	Ewa Mantaj	GWENSYLL PARK TIRIAN	62.105	118.0
2	Kerrie Bell	RHUMBLINE	57.895	110.0

Prep A Pony

1	Kristen Hill	COOPER	58.421	111.0
2	Cassidi Hallam	ELEGANT PARK OO LA LA	55.000	104.5
3	Amy Langlands	GEM	51.316	97.5

Prep A Junior

1	Emily Robinson	BANDIT	61.842	117.5
2	Grace Mantaj	BRANDY	61.053	116.0
3	Emily Robinson	INDI	60.789	115.5
4	Kyah Dema	BRAMPTON CASANOVA	53.684	102.0

Place	Rider	Horse	Avg %	Judge: Liz Pugh Score
-------	-------	-------	-------	-----------------------------

Prep C CU

1	Michelle Jarrett	ROSEGUM RISING SUN	62.250	124.5
2	Ewa Mantaj	GWENSYLL PARK TIRIAN	58.250	116.5
3	Maria Catacouzinos	FOREIGN RAIDER	57.750	115.5

Prep C pony

1	Kristen Smith	BROADWAY PARK CHOIR BOY	62.000	124.0
2	Kristen Hill	COOPER	57.250	114.5
3	Cassidi Hallam	ELEGANT PARK OO LA LA	50.500	101.0

Prep C Junior

1	Kyah Dema	BRAMPTON CASANOVA	58.250	116.5
2	Grace Mantaj	BRANDY	55.250	110.5

Place	Rider	Horse	Avg %	Judge: Ros Quist Score	Judge: Lauren James Score
-------	-------	-------	-------	------------------------------	---------------------------------

Preliminary 1.2 Official Competitive

1	Carlee Mottley	COORAMIN FAIRYTALE	64.135	169.0	164.5
---	----------------	--------------------	--------	-------	-------

Preliminary 1.2 Official Competitive Pony

1=	Kristen Smith	BROADWAY PARK CHOIR BOY	67.692	179.5	172.5
1=	Christan Trainor	CANYON HUGO BOSS	67.692	191.0	161.0
3	Christan Trainor	RISING MILLINIUM	65.865	172.5	170.0
4	Elizabeth Sugar	EVERGREEN HONEY	63.558	174.0	156.5
5	Brooke Allan	ASHAM MADONNA	61.635	165.5	155.0

Place	Rider	Horse	Avg %	Judge: Liz Pugh Score
-------	-------	-------	-------	-----------------------------

Preliminary 1.2 CU

1	Chloe Sears	ROCKY CREEK SIOUX BANDIT	62.885	163.5
2	Tracy Stead	CATALINA DE LA MONTANYA	62.692	163.0
3	Helga Rogers	EAGLE ROO TOBY	60.962	158.5
3	Karlle Triffitt	GEJOSI	60.192	156.5
5	Chloe Sears	BLAKEMORE BRUCE	58.846	153.0
6	Sonja Verheyen	TRT FORMATADOR	58.269	151.5
7=	Ashleigh Campton	BENTLEY	57.115	148.5
7=	Stacey Lloyd	PHANTOMS HERO	57.115	148.5
9	Amie Double	FOREVER HAPPY	54.615	142.0
10	Michelle Jarrett	ROSEGUM RISING SUN	53.846	140.0
11	Kerrie Bell	RHUMBLINE	52.692	137.0

Preliminary 1.2 CU Pony

1	Madeleine Phillips	SWANREACH GOLD CHARM	58.269	151.5
2	Sherida Findell	WALTZING MATILDA	46.346	120.5

Preliminary 1.2 CU Junior

1	Hayley Robl	ELVIS	60.962	158.5
2	Charlotte Phillips	ALOHA GLADIATOR	58.077	151.0

Place	Rider	Horse	Avg %	Judge: Ros Quist Score	Judge: Lauren James Score
-------	-------	-------	-------	------------------------------	---------------------------------

Preliminary 1.3 Official Competitive

1	Carlee Mottley	COORAMIN FAIRYTALE	64.565	150.5	146.5
---	----------------	--------------------	--------	-------	-------

Preliminary 1.3 Official Competitive Pony

1	Christan Trainor	CANYON HUGO BOSS	67.065	159.0	149.5
2	Christan Trainor	RISING MILLINIUM	65.543	152.5	149.0
3	Kristen Smith	BROADWAY PARK CHOIR BOY	64.348	148.5	147.5
4	Elizabeth Sugar	EVERGREEN HONEY	63.696	152.0	141.0

Place	Rider	Horse	Avg %	Judge: Sarina Hurst Score
-------	-------	-------	-------	---------------------------------

Preliminary 1.3 CU

1	Chloe Sears	BLAKEMORE BRUCE	65.652	151.0
2	Helga Rogers	EAGLE ROO TOBY	61.304	141.0
3	Sonja Verheyen	TRT FORMATADOR	60.870	140.0
4	Chloe Sears	ROCKY CREEK SIOUX BANDIT	60.435	139.0
5	Amie Double	FOREVER HAPPY	59.565	137.0
5	Stacey Lloyd	PHANTOMS HERO	58.696	135.0
7	Tracy Stead	CATALINA DE LA MONTANYA	57.391	132.0

Preliminary 1.3 CU Pony

1	Madeleine Phillips	SWANREACH GOLD CHARM	60.870	140.0
---	--------------------	----------------------	--------	-------

Preliminary 1.3 CU Junior

1	Hayley Robl	ELVIS	60.000	138.0
2	Taylor McLaughlin	THORNBURY PARK	59.348	136.5
3	Charlotte Phillips	ALOHA GLADIATOR	58.261	134.0
4	Abigail Kus	WYANN FERRERO ROCHER	53.043	122.0

Place	Rider	Horse	Avg %	Judge: Ros Quist Score	Judge: Lauren James Score
-------	-------	-------	-------	------------------------------	---------------------------------

Novice 2.2 Official Competitive

1	Tayah Stuart	BUCKWELL PARK GOSSIP GIRL	62.286	220.0	216.0
2	Amie Double	ARTAN	62.143	221.5	213.5
3	Deborah Duff	BEAM ME UP SCOTTY	57.357	208.0	193.5

Novice 2.2 Official Competitive Pony

1	Victoria Shephard	PEPPERCORN PARK ISABELLA	63.786	232.5	214.0
2	Brooke Allan	ASHAM MADONNA	57.000	203.0	196.0

Novice 2.2 CU

1	Hayley Hill	WELT'S ARGENTINA	61.214	221.5	207.0
2	Ashleigh Campton	BENTLEY	57.071	204.0	195.5

Novice 2.2 CU Junior

1	Taylor McLaughlin	THORNBURY PARK	61.071	220.0	207.5
---	-------------------	----------------	--------	-------	-------

Place	Rider	Horse	Avg %	Judge: Ros Quist Score	Judge: Lauren James Score
-------	-------	-------	-------	------------------------------	---------------------------------

Novice 2.3 Official Competitive

1	Tayah Stuart	BUCKWELL PARK GOSSIP GIRL	61.983	180.0	179.5
2	Hayley Hill	WELT'S ARGENTINA	57.759	174.0	161.0
3	Deborah Duff	BEAM ME UP SCOTTY	56.379	173.0	154.0

3rd Jackpot Prize - \$20

Novice 2.3 Official Competitive Pony

1	Victoria Shephard	PEPPERCORN PARK ISABELLA	62.845	192.5	172.0
---	-------------------	--------------------------	--------	-------	-------

2nd Jackpot Prize - \$30

Novice 2.3 CU Junior

1	Hayley Robl	ELVIS	63.017	191.5	174.0
2	Taylor McLaughlin	THORNBURY PARK	60.862	181.5	171.5

1st Jackpot Prize - \$50

Place	Rider	Horse	Avg %	Judge: Ros Quist Score	Judge: Lauren James Score
-------	-------	-------	-------	------------------------------	---------------------------------

Medium 4.2 OC

1	Alison Castle	STATFORD RAFAELLA	63.782	252.0	245.5
2	Martha Brister	HERBIE BLAKEMORE	61.090	239.0	237.5
3	Ashlee Ford	DONNER-VERSACE	57.628	227.5	222.0

Medium 4.3 OC

1	Alison Castle	STATFORD RAFAELLA	62.635	243.5	220.0
2	Martha Brister	HERBIE BLAKEMORE	60.000	229.5	214.5

SCEC 2016 Event Calendar

Month	Event	Location
5-21 August	Rio Olympic Games (Dressage 10-15 August)	Rio
Sunday 21 August	Dressage Competition – entries close 11pm Friday 5 August, enter via www.globalentriesonline.com.au	Terry Reserve AlbionPark
8-11 September	NSW State Championships	SIEC
Sunday September	Protocol Day – a chance to practice riding a test, have a lesson, be educated by visiting experts	Terry Reserve AlbionPark
Sunday 9 October	SCEC Dressage Championships – entries close 11pm Friday 23 September enter via www.globalentriesonline.com.au	Terry Reserve AlbionPark
tba October	National Dressage Championships	SIEC
Sunday 11 December	Dressage Competition – entries close 11pm, Friday 25 November enter via www.globalentriesonline.com.au	Terry Reserve AlbionPark

SOUTH COAST EQUESTRIAN CLUB COMPETITION PROGRAMME FOR 2016

<u>Sunday 21 August</u>	<u>Sunday 9 October Championships</u>	<u>Sunday 11 December</u>
Prep E EFA	Prep C EFA	Prep A EFA
Prep D EFA	Prep D EFA	Prep E EFA
Prelim 1.1	Prelim1.2	Prelim1.1
Prelim 1.3	Prelim 1.3	Prelim 1.2
Novice 2.1	Novice 2.2	Novice 2.1
Novice 2.3	Novice 2.3	Novice 2.2
Elementary 3.1	Elementary 3.2	Elementary 3.1
Elementary 3.3	Elementary 3.3	Elementary 3.2
Medium 4.1	Medium 4.2	Medium 4.1
Medium 4.3	Medium 4.3	Medium 4.2
Advanced 5.1	Advanced 5.2	Advanced 5.1
Advanced 5.3	Advanced 5.3	Advanced 5.2
*Prix St George	*Prix St George	*Prix St George
*Inter 1	*Inter 1	*Inter 1
*Inter 2	*Inter 2	*Inter 2
* Grand Prix	* Grand Prix	* Grand Prix
Closing date 5 August	Closing date 23 September	Closing date 25 November

Tests can be ridden Official Competitive, or Closed Unrestricted (old Associate).

Official tests can be ridden Open or Official Pony.

Competitive Unrestricted tests can be ridden Open, Open Pony or Junior.

* Please note we will endeavour to run FEI tests as Official depending on the availability of the appropriate judges.

2016 MEMBERSHIP APPLICATION FORM



We/I hereby apply for membership of the South Coast Equestrian Club Inc:

Family Name(s): <i>(member & guardian if applicable)</i>		Given Name/s:	
Address:			Postcode:
Email <i>(please print VERY clearly):</i>			
Contact Nos:	BH:	AH:	Mobile:

Rider Name:	DOB:	EA Reg #:
Horses Name:	Horse's EFA #:	Horse's Bridle #:
Pony (must not exceed 149cm with shoes or 148cm without shoes): Yes/No		Pony Height:

(EA Registration and Bridle number required to compete in official tests)

Rider Name:	DOB:	EA Reg #:
Horses Name:	Horse's EFA #:	Horse's Bridle #:
Pony (must not exceed 149cm with shoes or 148cm without shoes): Yes/No		Pony Height:

Non Rider Name(s):

I agree to abide by the Rules of the South Coast Equestrian Club Inc (SCEC). I understand that my membership is per calendar year and that I am entitled to members rates at all South Coast Equestrian Club Inc events within this period.

Please note that all members are expected to help at competitions and other club events during the year as part of their membership. A friend or relative can also provide help in your place. Jobs are many and varied, for varying lengths of time (a whole day is appreciated but not required). We cannot run events without your help!

Signed:..... **Date:**

Membership Fees <i>(per calendar year start Jan 2016):</i>		Send cheque/money order to:
Full Riding member	\$50.00	South Coast Equestrian Club Inc. PO Box 179 Jamberoo NSW 2533
Subsequent family members	\$25.00	
Social member	\$25.00	

☐ **I have enclosed a cheque/money order** (made out to South Cost Equestrian Club Inc) for \$

☐ **Please charge my** ☐ **Visa** ☐ **Mastercard** Amount: Date:

Card no: _____ Expiry date: ____ / ____ CCV no: _____
(LAST 3 DIGITS ON BACK OF CARD)

Full name on card: Cardholder's Signature:

(Enquiries to Frances Simmonds – 0411 092207)

Member Release and Waiver of Liability

Full Name of participant (and guardian if under 18 years):

.....

Address

State Post Code Date of birth

Name of Club/Organisation

Membership No.

Address of Event / Activity

In consideration for being permitted to participate in any way in horse sport activities, I, the undersigned, understand, acknowledge and accept that:

Horse sports are a dangerous recreational activity and horses can act in a sudden and unpredictable (changeable) way, especially if frightened or hurt.

There is a significant risk that serious **INJURY** or **DEATH** may result from horse sport activities.

I knowingly and freely assume all such risks, both known and unknown, and **I voluntarily**

PARTICIPATE at my **OWN RISK** and assume sole responsibility for any injury, death or property damage I may suffer that arises from my participation in horse sport activities.

I understand and acknowledge the dangers associated with the consumption of alcohol or any mind altering drugs before and during the activities and I take full responsibility for any injury, loss or damage associated with their consumption. I agree not to drink alcohol or take drugs prohibited by law before or during any horse sports activities.

I agree to follow the directions of any event organiser or official and that any misconduct or refusal by me to follow any direction of any organiser or official can result in the **CANCELLATION** of my participation in the activities and my immediate removal from my horse **NO MATTER** where that may occur. I understand that any such non-compliance may result in injury, death and/or permanent disability as a result of my failure to comply.

I agree to wear a helmet at all times whilst riding where this is required under the relevant EFA and FEI rules and regulations and agree that I am solely responsible for ensuring that whilst riding I wear a suitable helmet at all times where required under the relevant EFA and FEI rules and regulations and take sole responsibility for my actions.

I have had sufficient opportunity to read this assumption of risk agreement, fully understand its terms and sign it freely and voluntarily.

Dated:// Signature of rider/guardian

For Participants of Minority Age (Under Age 18)

This is to certify that I, as a parent/guardian with legal responsibility for this participant, acknowledge, understand and accept ALL OF THE ABOVE and consent and agree to my minor child's involvement or

participation in horse sport activities.

Dated:// Signature of rider/guardian