

# EXTENSIONS

SOUTH COAST EQUESTRIAN CLUB INC NEWSLETTER

April 2016

## Presidents Report April 2016

What a lovely start to the year. The weather was almost perfect, and the comp went off really well. Without Leanne and her truck this comp, we had to get the gear to the comp (thank you Ebony and her ute), and get it all set up. Instead of her truck being the focus of gear stewarding etc, we set up our gazebo ... and amazingly even when the wind came up a bit in the afternoon it was solid !!

Pony Club came back on board and provided a canteen. FANTASTIC !! The signs they put up let people know they were there and worked very well. Very good feedback on the canteen food and drink availability. We hope this will become a standard feature of our comps going forward. [For those who wonder what happened to Mugs Away, unfortunately he has sold his van and got out of the coffee van business ... our loss, we loved his coffee !!!]

Our next Dressage Competition day is on Sunday 1 May. Details of this

event can be found in this newsletter. Entry to our competitions is via [www.globalentriesonline.com.au](http://www.globalentriesonline.com.au) ... and is available to enter now.

Prior to the next comp we are holding a Training Day on Sunday 17 April for club members. A flyer for this event can be found in this newsletter. These days are ideal for bringing out young horses or those with limited competition or 'outings' for a 'soft' experience. And of course for accessing experienced coaches and judges in a non-threatening, non-competitive environment – with young or experienced horses. Entry is via [www.globalentriesonline.com.au](http://www.globalentriesonline.com.au) ... and is available to enter now.

Running competition days requires input from many people ... and we ask that all our members volunteer to help with one task or another as often as they possibly can, especially on competition days ... helping set up the grounds, pencilling, collecting tests are just some of the myriad of tasks that we need help with.

And a big thank you to all those who helped out at our first comp – we ac-

tually had the luxury of almost having more helpers than we needed – and of course that leads to a smoothly run day. So please don't be backward in coming forward and offering to help with whatever you can.

SCEC committee meetings are held at 7pm on Thursday's (see dates on our website; next date 7 April 2015) at the Albion Park Bowling Club. All members are welcome to attend committee meetings and we encourage anyone who may have ideas, suggestions or just a general interest in what's going on to come along.

Finally, in my role as President, happy riding.

**Frances Simmonds**  
President

SCEC is now  
on Facebook

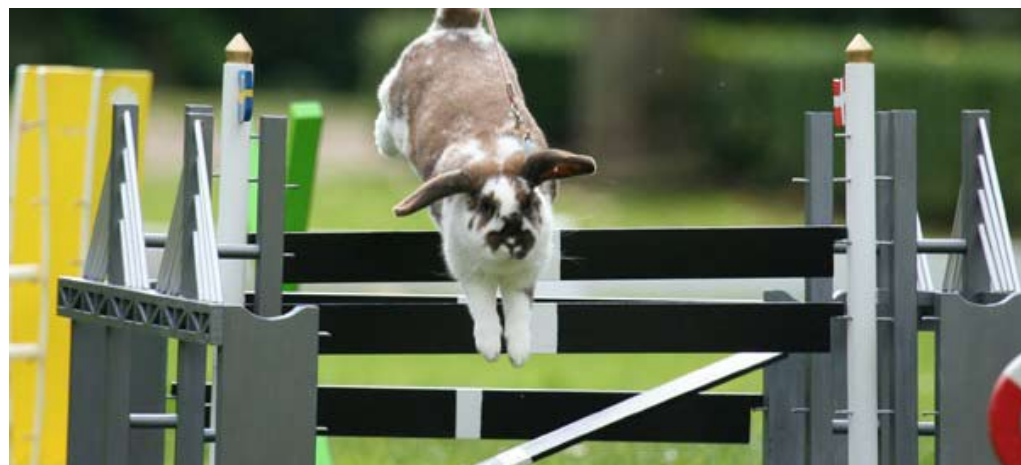


## **Next SCEC Competition**

# **Sunday 1st May**

**Entries on  
globalentriesonline.com.au**

**Close 9pm 15th April**



## **2016 SCEC Committee**

### **President**

**Frances Simmonds**

**0411 092 207**

**frances@uow.edu.au**

### **Co-Vice President**

**Ebony-Lee Holz**

**0408 165 231**

**ebony89@live.com.au**

### **Co-Vice President**

**Leanne Micallef**

**0439 464 631**

**lmicallef73@bigpond.com**

### **Secretary**

**Amanda Whittall**

**amanda.whittall@gmail.com**

### **Treasurer**

**Amy Langlands**

**amy@middletonfp.com.au**

### **Newsletter**

**Ewa Mantaj**

**ewamantaj@hotmail.com**

### **Judges Co-ordinator**

**Sandra Eldridge**

**mreldridge@myacn.net.au**

### **Committee**

**Sonja Verheyen**

**sonja.verheyen5@gmail.com**

**Monica Shephard**

**monnies1@hotmail.com**

## **Next SCEC Event**

# **Sunday 17th April Training Day**

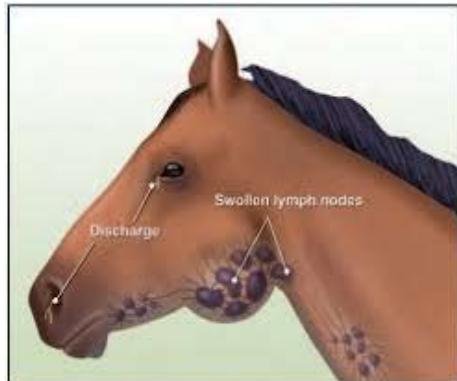
**Entries on globalentriesonline.com.au**



# Strangles

There have been recent outbreaks of strangles in the Illawarra which has caused some concern. Strangles is a disease caused by *Streptococcus equisubsp. equi* which is a highly contagious bacterium. It typically presents with a fever, decreased appetite and enlarged lymph nodes, in particular those around the head and neck. Not all infected horses will have enlarged lymph nodes so it is important to know your horse's normal temperatures so you can notice fever in an outbreak. Other signs to look out for include a nasal discharge, cough or difficulty swallowing. Infection is confirmed through nasal swabs sent to the lab.

Horses can be infected for 1 – 3 weeks before showing clinical signs. Abscesses can then develop for a further 2 – 3 weeks after that, which means there is a long period where the disease is contagious and active so all horses on an infected property should be quarantined to prevent further disease spread. Infected horses should be isolated for the duration of illness and a further 4 weeks after they have recovered.



Any people attending them should follow strict hygiene procedures and take a change of clothes so they can't carry the infection to other horses on the property. The infection easily spreads on equipment such as feed buckets and boots so equipment should not be shared without being thoroughly disinfected.



some horses can become carriers of the bacteria, it is important to identify these horses

through laboratory tests to prevent repeat outbreaks. New horses should be isolated from potentially infected horses for a minimum of 14 days.



Vaccination is a valuable tool in preventing outbreaks and reducing disease severity. The initial vaccination course is 3 vaccinations 2 weeks apart of either Equivac 2 in 1 (includes tetanus too) or Equivac S. After this your horse will need a booster every 12 months. It takes 2 weeks after completing the initial course of 3 vaccinations before immunity is adequate. Vaccinating infected horses is not recommended so it's best to keep your horse up to date with vaccination in case of a strangles outbreak.

Please don't hesitate to contact us on 4257 3322 or via [reception@iahvet.com.au](mailto:reception@iahvet.com.au) if you have any strangles or other equine questions.

Written by Paul Partland  
Illawarra Animal Hospital



# **SCEC Training Day**

**9 am, Sunday 17th April, 2016**

**Terry Reserve Albion Park**

**Take the opportunity to get your horse out and about in a relaxed atmosphere.**

**Great opportunity for juniors wanting to understand and perhaps try out this mysterious thing called Dressage !!**

**Have a 40 minute lesson with either **Tracy Stead** or **Danielle Fredericks**. You can warm up, ride a test and get judged by your instructor and then have a lesson and finish off by riding the test again. Or you can just have a lesson. If you would like to ride a test could you please bring two blank paper copies of the test with you, the instructors will have pencils with them.**

**Or just come along with your horse and ride on our spacious grounds. Ideal 'soft' experience for young horses or those with limited competition or "outings" experience.**

**Entry Fee to Grounds:**  
**\$10 per rider**  
(not applicable if you are having a lesson)

**Lessons (40 min slots) \$35 each**

**To enter you **must** be a current SCEC club member**

**To join SCEC complete and send Membership form and membership payment to  
PO Box 179, Jamberoo, NSW 2533**

**To book your place, enter via [www.globalentriesonline.com.au](http://www.globalentriesonline.com.au)**

**Entries close 9pm 10 April 2016  
Any queries contact  
Frances Simmonds,  
02 4236 0680,  
[frances@uow.edu.au](mailto:frances@uow.edu.au)**

**[southcoastquestrianclub.com.au](http://southcoastquestrianclub.com.au)**



## Tracy Stead

Tracy is one of the most experienced and versatile equestrian trainers in Australia. She is a fully qualified coach and has been a NCAS Equestrian coach since 1994. While she now trains dressage horses and riders, she has also been a highly successful show jumper having been a member of the Elite Show Jumping Team for over 5 years and on the reserve Olympic showjumping selection list.

Tracy has also been an A grade polocross player and a head equestrian coach in Malaysia for two years. She received training from Warwick Cozens who was trained by Aloiz Podhajski.

As a rider Tracy is an exceptionally good trainer with a very unique ability to cater to the educational, physical and emotional needs of any horse she rides, from young horses, kids ponies, sensitive horses to huge warmbloods. She almost looks more "at home" on the back of a horse than standing on her own two feet.



Being a great horse trainer however, does not make a great instructor and this is where Tracy truly shines. Not only is she an exceptional trainer but she is an even better teacher. She has a way of explaining things and a calm confidence that empowers her pupils to follow her instructions, get results and really learn. Among her pupils she is known as an incredibly kind teacher whom always goes above and beyond the call of duty for those fortunate enough to be her students.

# globalentriesonline.com.au

## Danielle Fredericks

Danielle Fredericks is a local NCAS level 1 dressage coach. With ten years professional experience, Danielle has trained over seas in Germany for Australian WEG competitor Peter Weston and renown German young rider trainer Caroline Roost. Danielle was head rider/stable manager and worked with both trainers in developing young horses and further educating horses right through to Grand Prix. On returning home to Australia Danielle started her own small business training horses along with working for Brett Parbery and Janince Usherwood.

Five years on and she is now based in Meroo Meadow and has established her own training base where she caters for a limited number of horses in work ( a boutique set up that allows her to cater fully to the needs and wants of each horse/ rider/ owner). Danielle also travels locally and interstate for lessons working on rider position and correct training of the dressage horse.



Also a competitor herself, you will see her out and about on up and coming young horses as well as taking part in clinics held with international coaches- great to know that an instructor is constantly bettering themselves too so as to further your training!!

**SCEC Dressage Competition - Results**  
**Sunday 6 March 2016**

Place	Rider	Horse	Avg %	Judge: Kimberley Davis Score
-------	-------	-------	-------	---------------------------------------

**Prep A CU**

1	Jenifer Symes	BELISSIMO KING HIT	66.842	127.0
2	Tracy Stead	SERENITY IMAGE	61.316	116.5
3	Amanda Whittall	BAXTER	53.947	102.5

**Prep A CU Pony**

1	Anne Boeck	SNICKERS	59.737	113.5
---	------------	----------	--------	-------

**Prep A CU Junior**

1	Ellie Burnett	RUBY	72.368	137.5
2	Grace Mantaj	BRANDY	62.632	119.0

Place	Rider	Horse	Avg %	Judge: Ros Quist Score
-------	-------	-------	-------	------------------------------

**Prep E CU**

1	Jenifer Symes	BELISSIMO KING HIT	66.842	127.0
2	Amanda Whittall	BAXTER	54.211	103.0

**Prep E CU Junior**

1	Emily Robinson	BANDIT	57.105	108.5
2	Emily Robinson	TONKA	55.263	105.0

Place	Rider	Horse	Avg %	Judge: Kimberley Davis Score	Judge: Tibby Barbour Score
-------	-------	-------	-------	---------------------------------------	----------------------------------

**Preliminary 1.1 Official Competitive**

1	Talina Wilson	GLENHILL TALLADEGA	62.159	138.0	135.5
2	Carlee Coombes	COORAMIN FAIRYTALE	61.250	139.5	130.0
3	Sandra Eldridge	EVERGREEN JEZABEL	58.750	131.0	127.5

**Preliminary 1.1 Official Competitive Pony**

1	Elizabeth Sugar	EVERGREEN HONEY	65.455	146.0	142.0
---	-----------------	-----------------	--------	-------	-------

Place	Rider	Horse	Avg %	Judge: Tibby Barbour Score
-------	-------	-------	-------	-------------------------------------

**Preliminary 1.1 CU**

1	Helga Rogers	EAGLEROO TOBY	68.182	150.0
2	Chloe Sears	ROCKY CREEK SIOUX BANDIT	66.591	146.5
3	Lucy Rae	OLIVER	65.455	144.0
3	Tracy Stead	CATALINA DE LA MONTANYA	63.636	140.0
5	Katherine McMaster	RED	60.909	134.0
6	Sonja Verheyen	MEDALLION	60.455	133.0
7	Frances Simmonds	EVERGREEN JIGSAW	60.227	132.5
8	Sonja Verheyen	TRT FORMATADOR	59.773	131.5
9	Kylie Gumley	REDGUM JESSIE	54.545	120.0

**Preliminary 1.1 CU Pony**

1	Tracy Stead	GEM	63.182	139.0
2	Sherida Findell	WALTZING MATILDA	62.727	138.0
3	Michelle Jarrett	ALLYNDAH MAZALI	59.091	130.0

**Preliminary 1.1 CU Junior**

1	Ellie Burnett	RUBY	63.409	139.5
2	Taylor McLaughlin	ELEGANT PARK BEDROCK	60.682	133.5
3	Chantelle Prosser	OBIE ONE KENOBI	60.227	132.5

Place	Rider	Horse	Avg %	Judge: Carolyn James Score
-------	-------	-------	-------	-------------------------------------

#### Preliminary 1.2 Official Competitive

1	Carlee Coombes	COORAMIN FAIRYTALE	66.923	174.0
2	Clare Edsor	WINDOURAN REMEMBRANCE	64.423	167.5
3	Talina Wilson	GLENHILL TALLADEGA	61.731	160.5
4	Sandra Eldridge	EVERGREEN JEZABEL	58.462	152.0

#### Preliminary 1.1 Official Competitive Pony

1	Elizabeth Sugar	EVERGREEN HONEY	64.423	167.5
---	-----------------	-----------------	--------	-------

Place	Rider	Horse	Avg %	Judge: Kimberley Davis Score
-------	-------	-------	-------	---------------------------------------

#### Preliminary 1.1 CU

1	Frances Simmonds	EVERGREEN JIGSAW	67.500	175.5
2	Tracy Stead	CATALINA DE LA MONTANYA	65.769	171.0
3	Helga Rogers	EAGLEEROO TOBY	65.192	169.5
4	Chloe Sears	ROCKY CREEK SIOUX BANDIT	65.000	169.0
5	Lucy Rae	OLIVER	64.038	166.5
6	Sonja Verheyen	TRT FORMATADOR	61.154	159.0
7	Katherine McMaster	RED	60.962	158.5
8	Sonja Verheyen	MEDALLION	55.385	144.0
9	Kylie Gumley	REDGUM JESSIE	54.808	142.5

#### Preliminary 1.2 CU Pony

1	Sherida Findell	WALTZING MATILDA	58.654	152.5
2	Michelle Jarrett	ALLYNDAH MAZALI	58.269	151.5

#### Preliminary 1.2 CU Junior

1	Taylor McLaughlin	THORNBURY PARK	67.692	176.0
2	Rhiannon Boughton	WITHERDINS EMMA	67.308	175.0
3=	Chantelle Prosser	OBIE ONE KENOBI	60.577	157.5
3=	Taylor McLaughlin	ELEGANT PARK BEDROCK	60.577	157.5

Place	Rider	Horse	Avg %	Judge: Carolyn James Score
-------	-------	-------	-------	-------------------------------------

#### Novice 2.1 Official Competitive

1	Peter Beauman	GOV'S REACTION	65.000	175.5
---	---------------	----------------	--------	-------

#### Novice 2.1 CU

1	Angus Fripp	TW FRANCHESKA	60.556	163.5
2	Clare Edsor	WINDOURAN REMEMBRANCE	59.630	161.0

#### Novice 2.1 CU Junior

1	Rhiannon Boughton	WITHERDINS EMMA	64.815	175.0
2	Taylor McLaughlin	THORNBURY PARK	61.852	167.0

Place	Rider	Horse	Avg %	Judge: Carolyn James Score
-------	-------	-------	-------	-------------------------------------

#### Novice 2.2 Official Competitive Pony

1	Victoria Shephard	PEPPERCORN PARK ISABELLA	69.429	243.0
---	-------------------	--------------------------	--------	-------

**Novice 2.2 CU**

1	Peter Beauman	GOV'S REACTION	61.429	215.0
---	---------------	----------------	--------	-------

**Novice 2.2 CU Junior**

1	Taylor McLaughlin	THORNBURY PARK	62.857	220.0
2	Rhiannon Boughton	WITHERDINS EMMA	62.286	218.0

Place	Rider	Horse	Avg %	Judge: Carolyn James Score	Judge: Ros Quist Score
-------	-------	-------	-------	-------------------------------------	------------------------------

**Elementary 3.1 Official Competitive**

1	Alison Castle	STATFORD RAFAELLA	72.045	243.5	232.0
2	Angus Fripp	FOXWOOD REMY	65.985	222.5	213.0

Place	Rider	Horse	Avg %	Judge: Ros Quist Score	Judge: Carolyn James Score
-------	-------	-------	-------	------------------------------	----------------------------------

**Elementary 3.2 Official Competitive**

1	Alison Castle	STATFORD RAFAELLA	71.319	247.5	266.0
2	Angus Fripp	FOXWOOD REMY	64.583	224.0	241.0
3	Victoria Shephard	PEPPERCORN PARK ISABELLA	60.000	212.0	220.0

--



## SOUTH COAST EQUESTRIAN CLUB COMPETITION PROGRAMME FOR 2016

<u>Sunday 1May</u>	<u>Sunday 3 July</u>	<u>Sunday 21 August</u>	<u>Sunday 9October Championships</u>	<u>Sunday 11December</u>
Prep A EFA	Prep E EFA	Prep E EFA	Prep C EFA	Prep A EFA
Prep C EFA	Prep C EFA	Prep D EFA	Prep D EFA	Prep E EFA
Prelim 1.1	Prelim 1.2	Prelim 1.1	Prelim1.2	Prelim1.1
Prelim 1.3	Prelim 1.3	Prelim 1.3	Prelim 1.3	Prelim 1.2
Novice 2.1	Novice 2.2	Novice 2.1	Novice 2.2	Novice 2.1
Novice 2.3	Novice 2.3	Novice 2.3	Novice 2.3	Novice 2.2
Elementary 3.1	Elementary 3.2	Elementary 3.1	Elementary 3.2	Elementary 3.1
Elementary 3.3	Elementary 3.3	Elementary 3.3	Elementary 3.3	Elementary 3.2
Medium 4.1	Medium 4.2	Medium 4.1	Medium 4.2	Medium 4.1
Medium 4.3	Medium 4.3	Medium 4.3	Medium 4.3	Medium 4.2
Advanced 5.1	Advanced 5.2	Advanced 5.1	Advanced 5.2	Advanced 5.1
Advanced 5.3	Advanced 5.3	Advanced 5.3	Advanced 5.3	Advanced 5.2
*Prix St George	*Prix St George	*Prix St George	*Prix St George	*Prix St George
*Inter 1	*Inter 1	*Inter 1	*Inter 1	*Inter 1
*Inter 2	*Inter 2	*Inter 2	*Inter 2	*Inter 2
* Grand Prix	* Grand Prix	* Grand Prix	* Grand Prix	* Grand Prix
Closing date 15 April	Closing date 17 June	Closing date 5 August	Closing date 23 September	Closing date 25 November

**Tests can be ridden Official Competitive, or Closed Unrestricted (old Associate).**

**Official tests can be ridden Open or Official Pony.**

**Competitive Unrestricted tests can be ridden Open, Open Pony or Junior.**

\* Please note we will endeavour to run FEI tests as Official depending on the availability of the appropriate judges.

## SCEC 2016 Event Calendar

Month	Event	Location
6-9 April	Sydney CDI	Sydney International Equestrian Centre (SIEC)
Sunday 17 April	Protocol Day - a chance to practice riding a test, have a lesson, bring out young horses in a relaxed atmosphere	Terry Reserve AlbionPark
Sunday 1 May	Dressage Competition - entries close 11pm Friday 15 April, enter via <a href="http://www.globalentriesonline.com.au">www.globalentriesonline.com.au</a>	Terry Reserve AlbionPark
Sunday 3 July	Dressage Competition - entries close 11pm Friday 17 June enter via <a href="http://www.globalentriesonline.com.au">www.globalentriesonline.com.au</a>	Terry Reserve AlbionPark
July evening	Horsey Christmas in July	
5-21 August	Rio Olympic Games (Dressage 10-15 August)	Rio
Sunday 21 August	Dressage Competition - entries close 11pm Friday 5 August, enter via <a href="http://www.globalentriesonline.com.au">www.globalentriesonline.com.au</a>	Terry Reserve AlbionPark
8-11 September	NSW State Championships	SIEC
Sunday September	Protocol Day - a chance to practice riding a test, have a lesson, be educated by visiting experts	Terry Reserve AlbionPark
Sunday 9 October	SCEC Dressage Championships - entries close 11pm Friday 23 September enter via <a href="http://www.globalentriesonline.com.au">www.globalentriesonline.com.au</a>	Terry Reserve AlbionPark
tba October	National Dressage Championships	SIEC
Sunday 11 December	Dressage Competition - entries close 11pm, Friday 25 November enter via <a href="http://www.globalentriesonline.com.au">www.globalentriesonline.com.au</a>	Terry Reserve AlbionPark

# 2016 MEMBERSHIP APPLICATION FORM



**We/I hereby apply for membership of the South Coast Equestrian Club Inc:**

<b>Family Name(s):</b> <i>(member &amp; guardian if applicable)</i>		<b>Given Name/s:</b>	
<b>Address:</b>			<b>Postcode:</b>
<b>Email</b> <i>(please print VERY clearly):</i>			
<b>Contact Nos:</b>	<b>BH:</b>	<b>AH:</b>	<b>Mobile:</b>

<b>Rider Name:</b>	<b>DOB:</b>	<b>EA Reg #:</b>
<b>Horses Name:</b>	<b>Horse's EFA #:</b>	<b>Horse's Bridle #:</b>
<b>Pony</b> (must not exceed 149cm with shoes or 148cm without shoes): <b>Yes/No</b>		<b>Pony Height:</b>

*(EA Registration and Bridle number required to compete in official tests)*

<b>Rider Name:</b>	<b>DOB:</b>	<b>EA Reg #:</b>
<b>Horses Name:</b>	<b>Horse's EFA #:</b>	<b>Horse's Bridle #:</b>
<b>Pony</b> (must not exceed 149cm with shoes or 148cm without shoes): <b>Yes/No</b>		<b>Pony Height:</b>

<b>Non Rider Name(s):</b>
---------------------------

**I agree to abide by the Rules of the South Coast Equestrian Club Inc (SCEC). I understand that my membership is per calendar year and that I am entitled to members rates at all South Coast Equestrian Club Inc events within this period.**

Please note that all members are expected to help at competitions and other club events during the year as part of their membership. A friend or relative can also provide help in your place. Jobs are many and varied, for varying lengths of time (a whole day is appreciated but not required). We cannot run events without your help!

**Signed:**..... **Date:** .....

<b>Membership Fees</b> <i>(per calendar year start Jan 2016):</i>		<b>Send cheque/money order to:</b>
<b>Full Riding member</b>	<b>\$50.00</b>	South Coast Equestrian Club Inc. PO Box 179 Jamberoo NSW 2533
<b>Subsequent family members</b>	<b>\$25.00</b>	
<b>Social member</b>	<b>\$25.00</b>	

☐ **I have enclosed a cheque/money order** (made out to South Cost Equestrian Club Inc) for \$ .....

☐ **Please charge my** ☐ **Visa** ☐ **Mastercard** Amount: ..... Date: .....

Card no: \_\_\_\_\_ Expiry date: \_\_\_\_ / \_\_\_\_ CCV no: \_\_\_\_\_  
(LAST 3 DIGITS ON BACK OF CARD)

Full name on card: ..... Cardholder's Signature: .....

***(Enquiries to Frances Simmonds – 0411 092207)***



## Member Release and Waiver of Liability

Full Name of participant (and guardian if under 18 years):

.....

Address .....

State ..... Post Code ..... Date of birth .....

Name of Club/Organisation .....

Membership No. ....

Address of Event / Activity .....

In consideration for being permitted to participate in any way in horse sport activities, I, the undersigned, understand, acknowledge and accept that:

Horse sports are a dangerous recreational activity and horses can act in a sudden and unpredictable (changeable) way, especially if frightened or hurt.

There is a significant risk that serious **INJURY** or **DEATH** may result from horse sport activities.

I knowingly and freely assume all such risks, both known and unknown, and **I voluntarily**

**PARTICIPATE** at my **OWN RISK** and assume sole responsibility for any injury, death or property damage I may suffer that arises from my participation in horse sport activities.

I understand and acknowledge the dangers associated with the consumption of alcohol or any mind altering drugs before and during the activities and I take full responsibility for any injury, loss or damage associated with their consumption. I agree not to drink alcohol or take drugs prohibited by law before or during any horse sports activities.

I agree to follow the directions of any event organiser or official and that any misconduct or refusal by me to follow any direction of any organiser or official can result in the **CANCELLATION** of my participation in the activities and my immediate removal from my horse **NO MATTER** where that may occur. I understand that any such non-compliance may result in injury, death and/or permanent disability as a result of my failure to comply.

I agree to wear a helmet at all times whilst riding where this is required under the relevant EFA and FEI rules and regulations and agree that I am solely responsible for ensuring that whilst riding I wear a suitable helmet at all times where required under the relevant EFA and FEI rules and regulations and take sole responsibility for my actions.

I have had sufficient opportunity to read this assumption of risk agreement, fully understand its terms and sign it freely and voluntarily.

Dated: ...../ ...../ ..... Signature of rider/guardian .....

### For Participants of Minority Age (Under Age 18)

This is to certify that I, as a parent/guardian with legal responsibility for this participant, acknowledge, understand and accept ALL OF THE ABOVE and consent and agree to my minor child's involvement or

participation in horse sport activities.

Dated: ...../ ...../ ..... Signature of rider/guardian .....