

EXTENSIONS

SOUTH COAST EQUESTRIAN CLUB INC NEWSLETTER

July 2012

From the President July 2012

Again, we were so fortunate in the weather. Given all the rain we had in the weeks leading up to the June comp, I was quite convinced when we went to inspect the grounds that we would have to cancel, but the gods were smiling and obviously the wind had played its part and the majority of arenas were OK ... not perfect but rideable !!! And we had a great comp day ... although it was quite fresh early, it warmed up considerably, and layers were rapidly rejected by both riders and horses as it warmed up !!!

Congratulations to the winners of our Jackpot class ... the 2C Associate. Congratulations to Kate Whitaker who won first AND second with her two horses (Hillgrove Windchime 62.813%, and Just Like Heaven 59.688%) ... she and her mum were very happy !!! And congratulations to Caroline Morley who came third (59.609%) !!

And we had some great results by some of the young horses ... Cathy Chittenden's Neversfelde Spingbok, and Jane Bruce's CP Dresden.

Our next comp is Sunday 19 August 2012 ... details can be found in this newsletter. Don't forget SCEC have gone online – entry to our competitions is via www.globalentriesonline.com.au ... the comp is up and ready to receive entries, closing date is 9pm Friday 3 August. Don't forget that if you still have a credit with SCEC from the March comp, then when entering this comp please take account of your credit and only pay any additional amount required. If you do not need to pay anything extra then indicate you will be paying by CASH and the system will not require an immediate payment. We will monitor who has paid what.

Running competition days requires input from many people ... and we have been so impressed over the last few comps with the number of people volunteering ... thank you all so much ... you have made our task of running the comp so much easier !!! Helping set up the grounds, penciling, collecting tests are just some of the myriad

of tasks that we need help with. So please keep it up ... don't be backward in coming forward and offering to help with whatever you can.

This year SCEC committee meetings will be held on the Tuesday a week and a half before each comp – that is, the committee will meet 6 times during the year (and probably an extra at the end of the year to sort out HOTY/point score etc), rather than each month. All members are welcome and we encourage anyone who may have ideas, suggestions or just a general interest in what's going on to come along. The next meeting is on Tuesday 7th August at 7.30pm at the Aviator Lounge, Albion Park Airport.

Finally, in my role as President, happy riding, and I look forward to talking, working and riding with many of you over the next year.

Frances Simmonds
President 2011



\$ 15



\$ 25



<http://go.funpic.hu>

**Next
Competition**

19th August, 2012

globalentriesonline.com.au

**Entries close
9 pm 3rd August**



2011 SCEC Committee

President

Frances Simmonds

(02) 4236 0680

0411 092 207

frances@uow.edu.au

Vice President / Treasurer

Leanne Micallef

(02) 4262 5523

0439 464 631

leanne.micallef@three.com.au

Public Officer

Katherine McMaster

0408 861 086

paddockwarrior@bigpond.com

Newsletter

Ewa Mantaj

ewamantaj@hotmail.com

Committee

Tibby Barbour

Ebony-Lee Holz

Winners are Grinners

Jackpot Class June 2012

1st

**Kate Whitaker on
Hillgrove Windchime**

62.813%

2nd

**Kate Whitaker on
Just Like Heaven**

59.688%

3rd

**Caroline Morley on
Heyde Genesis**

59.609%

Enter our next competition at

globalentriesonline.com.au

Khonke's Handy Hints

Ulcers

Up to 90% of horses in race and event training have eroded and ulcerated surfaces of the non-glandular stomach area.

Dressage horses have the highest incidence of ulcers in equestrian horses (60%), possibly caused by abdominal muscle contraction when collected under saddle and driving with their hindquarters.

100% of foals that have been stressed due to separation, injury or sickness develop gastric ulcers. Grinding their teeth when standing and refusing to eat are signs of gastric ulcers in foals.

Less than 10% of horses at pasture have gastric ulcers.

If you suspect ulcers seek veterinary advice and your vet may perscribe anti-ulcer medication.

Try to give horses 2-3 small feeds daily when stabled without grazing.

Preferably feed at ground level to encourage chewing and slow feed consumption.

'Long chop' or 'rough cut' chaff with a length of 2-4cm has been shown to facilitate chewing and salivation as compared to fine cut chaff. Saliva acts as a buffer to reduce the effects of stomach acid on the lining of the stomach.

Feed around 1/4 of a biscuit of lucerne hay or 500g of lucerne chaff before the horse is exercised. This is especially important if the horse is stabled and has not eaten for several hours, or overnight. This will buffer the gastric contents during exercise and limit stomach content 'splash' that can irritate the upper non-glandular area of the stomach that is not protected by an acid resistant mucous coating.

Khonke's Own Gastro-Coat can be given as a slurry paste by syringe within 5-10 minutes before each feed for 2-3 days. Administer immedi-

ately after mixing with water before it turns into a thick, sticky gel. This will help maintain normal stomach wall conditions. It can also be mixed in the top layer of a dry feed so that the horse consumes it before the bulk of the feed.

If a horse is known to suffer from travel anxiety or goes off its feed after long distance travel, particularly following the return trip from competition, then offering 4 liters of slightly dampened lucerne chaff, 3-4 scoops of Khonke's Own Gastro-Coat and 2 tablespoonsful of limestone powder (eg Ag-Lime) will help gastric buffering during travelling and maintain normal gastric function to minimise stomach 'burn' and risk of gastric ulcers during long distance travel. A similar meal given at each rest stop and on arrival will help an anxious traveller avoid the discomfort of gastric irritation during and following travelling.

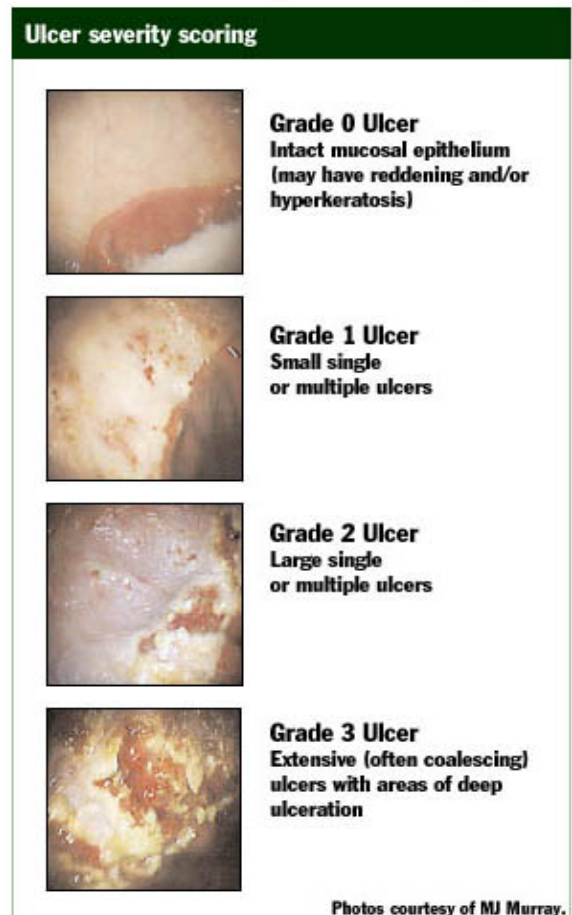
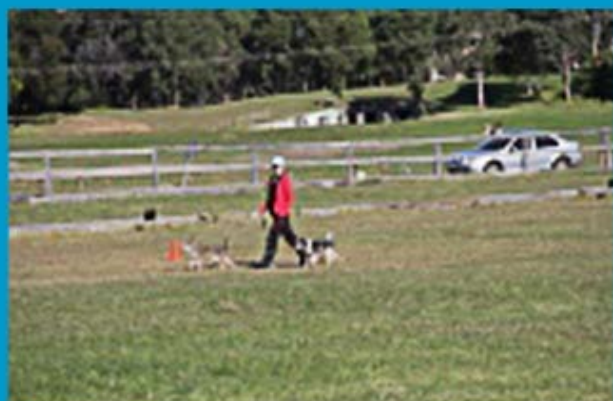


Image from <http://adobeveterinarycenter.blogspot.com.au> (12/7/12)

Reproduced, with permission from "Talking Horses" Equestrian Issue 27 by Dr John Kohnke.

June 2012 Competition





SCEC Dressage Competition - Results
Sunday 24 June 2012

Place	Rider	Horse	Avg %	Judge: Kimberley Davis Score
-------	-------	-------	-------	---------------------------------------

Prep 1 Associate

1	Katherine McMaster	BAXTER	56.000	84.0
2	Stacey Bennett	PHATOM'S HERO	51.333	77.0

Prep 1 Junior

1	Brooke Zanin	FAITH	58.333	87.5
---	--------------	-------	--------	------

Place	Rider	Horse	Avg %	Judge: Kylie Blacka Score
-------	-------	-------	-------	---------------------------------

Prep 3 Associate

1	Katherine McMaster	BAXTER	62.750	125.5
2	Stacey Bennett	PHATOM'S HERO	51.500	103.0

Prep 3 Junior

1	Brooke Zanin	FAITH	62.250	124.5
---	--------------	-------	--------	-------

Place	Rider	Horse	Avg %	Judge: Barb Vial Score
-------	-------	-------	-------	------------------------------

Preliminary 1B Official

1	Cathy Chittenden	NEVERSFELDE SPRINGBOK	69.000	172.5
2	Lesley Gray	HIGHLAND REFLECTION	67.800	169.5
3	Rachel Silm	ASTREUS	66.400	166.0
4	Jane Bruce	CP DRESDEN	65.400	163.5
5	Nicole Dredge	HOLLYWOOD HULLABALOO	59.000	147.5
6	Sandra Eldridge	EVERGREEN JEZABEL	55.600	139.0

Preliminary 1B Official Pony

1=	Victoria Shephard	PEPPERCORN PARK ISABELLA	60.000	150.0
1=	Rohini Crombie	CANYON SAVANNAH	60.000	150.0

Preliminary 1B Associate

1	Annabel Armstrong	WINDOURAN LADDY	66.600	166.5
2	Ewa Mantaj	GWENSYLL PARK TIRIAN	65.800	164.5
3	Annabel Armstrong	JOLLIBE	65.600	164.0
4	Isabella Burnett	ZARA	65.400	163.5
5	Natasha Hicks	NAMARRAY COUNTDOWN	63.200	158.0
6	Terry Davis	SQUIZZY	61.120	152.8
7	Sharyn Bolton	PLUM ASH	58.000	145.0

Place	Rider	Horse	Avg %	Judge: Tibby Barbour Score
-------	-------	-------	-------	-------------------------------------

Preliminary 1B Junior

1	Angus Fripp	TOBY	65.200	163.0
2	Harrison Rainnie	SP PHANTASTIC	64.800	162.0
3	Isabella Burnett	ZARA	62.400	156.0

Place	Rider	Horse	Avg %	Judge: Robyn Targa Score
-------	-------	-------	-------	--------------------------------

Preliminary 1C Official

1	Cathy Chittenden	NEVERSFELDE SPRINGBOK	71.364	157.0
2	Jane Bruce	CP DRESDEN	71.364	157.0
3	Rachel Silm	ASTREUS	65.909	145.0
4	Nicole Dredge	HOLLYWOOD HULLABALOO	53.182	117.0
5	Sandra Eldridge	EVERGREEN JEZABEL	50.227	110.5

Preliminary 1C Official Pony

1	Victoria Shephard	PEPPERCORN PARK ISABELLA	63.409	139.5
2	Rohini Crombie	CANYON SAVANNAH	59.091	130.0

Preliminary 1C Associate

1	Annabel Armstrong	JOLLIBE	67.273	148.0
2	Ewa Mantaj	GWENSYLL PARK TIRIAN	63.409	139.5
3	Annabel Armstrong	WINDOURAN LADDY	63.409	139.5
4	Natasha Hicks	NAMARRAY COUNTDOWN	57.955	127.5
5	Laura Robinson	NEVERSFELDE FAUST	57.500	126.5
6	Terry Davis	SQUIZZY	56.364	124.0
7	Sharyn Bolton	PLUM ASH	54.318	119.5

Preliminary 1C Junior

2	Angus Fripp	TOBY	64.091	141.0
3	Isabella Burnett	ZARA	59.773	131.5

Place	Rider	Horse	Avg %	Judge: Cobie Brinkman Score	Judge: Kylie Blacka Score
-------	-------	-------	-------	-----------------------------	---------------------------

Novice 2B Official

1	Graeme Swan	WAIWERA WELT'S ANGEL	65.758	218.0	216
2	Leigh Richardson	QUARRYVIEW HERCULES	62.879	207.5	207.5
3	Deborah Duff	BEAM ME UP SCOTTY	62.576	206.0	207

Novice 2B Official Pony

1	Kate Whitaker	HILLGROVE WINDCHIME	64.394	215.0	210
---	---------------	---------------------	--------	-------	-----

Novice 2B Associate

1	Tina Stafford	UNREPENTANT	61.061	196.0	207
2	Caroline Morley	HEYDE GENESIS	60.227	188.0	209.5
3	Ewa Mantaj	GWENSYLL PARK TIRIAN	58.030	193.0	190
4	Laura Robinson	NEVERSFELDE FAUST	57.879	187.0	195

Novice 2B Junior

1	Harrison Rainnie	SP PHANTASTIC	60.152	192.0	205
2	Angus Fripp	TOBY	52.576	175.0	172

Place	Rider	Horse	Avg %	Judge: Cobie Brinkman Score	Judge: Kylie Blacka Score
-------	-------	-------	-------	-----------------------------	---------------------------

Novice 2C Official

1	Lesley Gray	HIGHLAND REFLECTION	66.016	222	200.5
2	Graeme Swan	WAIWERA WELT'S ANGEL	62.422	203.5	196
3	Leigh Richardson	QUARRYVIEW HERCULES	59.688	193.5	188.5

Place	Rider	Horse	Avg %	Judge: Kylie Blacka Score
-------	-------	-------	-------	---------------------------

Novice 2C Associate - JACKPOT CLASS

1	Kate Whitaker	HILLGROVE WINDCHIME	62.813	203.5	198.5
2	Kate Whitaker	JUST LIKE HEAVEN	59.688	195.0	187.0
3	Carolyne Morley	HEYDE GENESIS	59.609	187.0	194.5
4	Tina Stafford	UNREPENTANT	58.906	189.5	187.5
5	Deborah Duff	BEAM ME UP SCOTTY	58.047	191.5	180.0

1st Prize - \$50
2nd Prize - \$25
3rd Prize - \$15

Novice 2C Junior

1	Harrison Rainnie	SP PHANTASTIC	56.406	178.5	182.5
---	------------------	---------------	--------	-------	-------

Place	Rider	Horse	Avg %	Judge: Sue Cunningham Score
-------	-------	-------	-------	-----------------------------

Elementary 3B Official

1	James Collin	JAYBEE CALLIOPE	65.382	222.3
2	Hamish Cargill	STARBURST	63.529	216.0
3	Frances Simmonds	APH SEAL ROCK	61.765	210.0
4	Ebony-lee Holz	KINNORDY GAROD	60.882	207.0
5	Cathie Swan	KILMANEY OMBRE	54.559	185.5
6	Leigh Richardson	QUARRYVIEW HERCULES	51.471	175.0

Place	Rider	Horse	Avg %	Judge: Sue Cunningham Score
-------	-------	-------	-------	-----------------------------------

Elementary 3C Official

1	James Collin	JAYBEE CALLIOPE	66.125	264.5
2	Frances Simmonds	APH SEAL ROCK	59.750	239.0
3	Ebony-lee Holz	KINNORDY GAROD	55.750	223.0
4	Cathie Swan	KILMANEY OMBRE	51.250	205.0
5	Kate Whitaker	JUST LIKE HEAVEN	47.375	189.5
6	Hamish Cargill	STARBURST	retired	

Place	Rider	Horse	Avg %	Judge: Sue Cunningham Score
-------	-------	-------	-------	-----------------------------------

Medium 4B Official

1	James Collin	SOUTHERLY	67.222	242.0
2	Kim McDonald	WARBURTON REGATTA	61.944	223.0
3	Annabel Armstrong	JACK IN A BOX	58.056	209.0

Place	Rider	Horse	Avg %	Judge: Sue Cunningham Score	Judge: Barb Vial Score
-------	-------	-------	-------	-----------------------------------	------------------------------

Medium 4C Official

1	James Collin	SOUTHERLY	67.313	259.5	279.0
2	Kim McDonald	WARBURTON REGATTA	60.375	234.0	249.0
3	Frances Simmonds	APH SEAL ROCK	58.563	230.0	238.5
4	Annabel Armstrong	JACK IN A BOX	55.063	218.0	222.5

Place	Rider	Horse	Avg %	Judge: Sue Cunningham Score
-------	-------	-------	-------	-----------------------------------

Advanced 5B Official

1	Kim McDonald	REVELLER	62.805	257.5
2	Ros Quist	VALHALLA FLEMMINGH	59.268	243

Place	Rider	Horse	Avg %	Judge: Sue Cunningham Score	Judge: Barb Vial Score
-------	-------	-------	-------	-----------------------------------	------------------------------

Prix St George

1	James Collin	DON FREDERIC	61.842	227.5	242.5
2	Kim McDonald	REVELLER	61.316	224	242
3	Ros Quist	VALHALLA FLEMMINGH	58.224	218.5	224

Intermediate II

1	Mark Arthur	KOOINDA SAINT	62.961	242	236.5
---	-------------	---------------	--------	-----	-------

Grand Prix

1	Mark Arthur	KOOINDA SAINT	62.713	287	302.5
---	-------------	---------------	--------	-----	-------

--	--	--	--	--	--

SCEC 2012 Event Calendar

Month	Event	Location
27 July – 8 August	Olympic Games,	London, UK
Sunday 19 August	Dressage Competition – entries close 9pm 3 Aug, enter via www.globalentriesonline.com.au	Terry Reserve Albion Park
Aug/Sept (date tba)	Clinic / Seminar on Horse Management subject	
Sunday 23 September	Training Day – a chance to practice riding a test, have a lesson, be educated by visiting experts	Terry Reserve Albion Park
Sunday 14 October	SCEC Dressage Championships – entries close 9pm 28 September enter via www.globalentriesonline.com.au	Terry Reserve Albion Park
25-28 October	National Dressage Championships	Sydney International Equestrian Centre
Sunday 2 December	Dressage Competition – entries close 9pm, 16 November enter via www.globalentriesonline.com.au	Terry Reserve Albion Park

SOUTH COAST EQUESTRIAN CLUB COMPETITION PROGRAMME FOR 2012

<u>Sunday 19 August</u>	<u>Sunday 14 October Championships</u>	<u>Sunday 2 December</u>
Prep 2 EFA	Prep 3 EFA	Prep 1 EFA
Prep 4 EFA	Prep 4 EFA	Prep 4 EFA
Prelim 1B Assoc/Official	Prelim1C Assoc/Official	Prelim1A Assoc/Official
Prelim 1D Assoc/Official	Prelim 1D Assoc/Official	Prelim 1D Assoc/Official
Novice 2B Assoc/Official	Novice 2C Assoc/Official	Novice 2A Assoc/Official
Novice 2D Assoc/Official	Novice 2D Assoc/Official	Novice 2D Assoc/Official
Elementary 3B Assoc/Official	Elementary 3C Assoc/Official	Elementary 3A Assoc/Official
Elementary 3D Assoc/Official	Elementary 3D Assoc/Official	Elementary 3D Assoc/Official
Medium 4A Assoc/Official	Medium 4B Assoc/Official	Medium 4A Assoc/Official
Medium 4C Assoc/Official	Medium 4C Assoc/Official	Medium 4C Assoc/Official
Advanced 5A Assoc/Official	Advanced 5B Assoc/Official	Advanced 5A Assoc/Official
Advanced 5C Assoc/Official	Advanced 5C Assoc/Official	Advanced 5C Assoc/Official
*Prix St George Assoc/Official	Prix St George Assoc/Official	*Prix St George Assoc/Official
*Inter 1 Assoc/Official	Inter 1 Assoc/Official	*Inter 1 Assoc/Official
*Inter 2 Assoc/Official	Inter 2 Assoc/Official	*Inter 2 Assoc/Official
* Grand Prix Assoc/Official	Grand Prix Assoc/Official	*Grand Prix Assoc/Official
Closing date 3 August	Closing date 28 September	Closing date 16 November

Associate tests can be ridden Open, Open Pony or Junior, Official tests can be ridden Open or Official Pony.

* Please note we will endeavour to run FEI tests as Official depending on the availability of the appropriate judges.

2012 MEMBERSHIP APPLICATION FORM



We/I hereby apply for membership of the South Coast Equestrian Club Inc:

Family Name(s): <i>(member & guardian if applicable)</i>		Given Name/s:	
Address:			Postcode:
Email <i>(please print VERY clearly)</i> :			
Contact Nos:	BH:	AH:	Mobile:

Rider Name:	DOB:	EA Reg #:
Horses Name:	Horse's EFA #:	Horse's Bridle #:
Pony (must not exceed 149cm with shoes or 148cm without shoes): Yes/No		Pony Height:

(EA Registration and Bridle number required to compete in official tests)

Rider Name:	DOB:	EA Reg #:
Horses Name:	Horse's EFA #:	Horse's Bridle #:
Pony (must not exceed 149cm with shoes or 148cm without shoes): Yes/No		Pony Height:

Non Rider Name(s):

I agree to abide by the Rules of the South Coast Equestrian Club Inc (SCEC). I understand that my membership is per calendar year and that I am entitled to members rates at all South Coast Equestrian Club Inc events within this period.

Please note that all members are expected to help at competitions and other club events during the year as part of their membership. A friend or relative can also provide help in your place. Jobs are many and varied, for varying lengths of time (a whole day is appreciated but not required). We cannot run events without your help!

Signed:..... **Date:**

Membership Fees <i>(per calendar year start Jan 2012):</i>		Send cheque/money order to:
Full Riding member	\$50.00	South Coast Equestrian Club Inc.
Subsequent family members	\$25.00	PO Box 179
Social member	\$25.00	Jamberoo NSW 2533

☐ **I have enclosed a cheque/money order** (made out to South Cost Equestrian Club Inc) for \$

☐ **Please charge my** ☐ **Visa** ☐ **Mastercard** Amount: Date:

Card no: _____ Expiry date: ____ / ____ CCV no: _____
(LAST 3 DIGITS ON BACK OF CARD)

Full name on card: Cardholder's Signature:

(Enquiries to Frances Simmonds – 02 4236 0680; 0411 092207)

Member Release and Waiver of Liability



Full Name of participant (and guardian if under 18 years):

.....

Address

State..... Post Code..... Date of birth

Name of Club/Organisation.....

Membership No.

Address of Event / Activity.....

In consideration for being permitted to participate in any way in horse sport activities, I, the undersigned, understand, acknowledge and accept that:

Horse sports are a dangerous recreational activity and horses can act in a sudden and unpredictable (changeable) way, especially if frightened or hurt.

There is a significant risk that serious **INJURY** or **DEATH** may result from horse sport activities.

I knowingly and freely assume all such risks, both known and unknown, and **I voluntarily PARTICIPATE** at my **OWN RISK** and assume sole responsibility for any injury, death or property damage I may suffer that arises from my participation in horse sport activities.

I understand and acknowledge the dangers associated with the consumption of alcohol or any mind altering drugs before and during the activities and I take full responsibility for any injury, loss or damage associated with their consumption. I agree not to drink alcohol or take drugs prohibited by law before or during any horse sports activities.

I agree to follow the directions of any event organiser or official and that any misconduct or refusal by me to follow any direction of any organiser or official can result in the **CANCELLATION** of my participation in the activities and my immediate removal from my horse **NO MATTER** where that may occur. I understand that any such non-compliance may result in injury, death and/or permanent disability as a result of my failure to comply.

I agree to wear a helmet at all times whilst riding where this is required under the relevant EFA and FEI rules and regulations and agree that I am solely responsible for ensuring that whilst riding I wear a suitable helmet at all times where required under the relevant EFA and FEI rules and regulations and take sole responsibility for my actions.

I have had sufficient opportunity to read this assumption of risk agreement, fully understand its terms and sign it freely and voluntarily.

Dated:/...../..... Signature of rider/guardian.....

For Participants of Minority Age (Under Age 18)

This is to certify that I, as a parent/guardian with legal responsibility for this participant, acknowledge, understand and accept ALL OF THE ABOVE and consent and agree to my minor child's involvement or participation in horse sport activities.

Dated:/...../..... Signature of rider/guardian.....

Stop Press

Smart SCEC Club Shirts & Caps are on order:



\$25.00



\$15.00

Order by email, phone or fax

Yes please, I (name) _____

would like to order _____ SCEC club shirt(s) ... \$25.00 each Size(s) _____

would like to order _____ SCEC club cap(s) ... \$15.00 each Size(s) _____

Delivery at competition day or add \$9.95 for mailing option

☐ **I have enclosed a cheque/money order** (made out to South Coast Equestrian Club Inc) for \$

☐ **Please charge my** ☐ **Visa** ☐ **Mastercard** Amount: Date:

Card no: _____ Expiry date: ____ / ____ CCV no: _____
(LAST 3 DIGITS ON BACK OF CARD)

Full name on card: Cardholder's Signature: